



Roller Door in Ashwood



**If you're ready to draw the line at average and reach for better call us today.**

To locate Steel-Line branches across Australia call: **1300 427 243** or visit [steel-line.com.au](http://steel-line.com.au)

## **UniCote®** LUX

### Roller Door

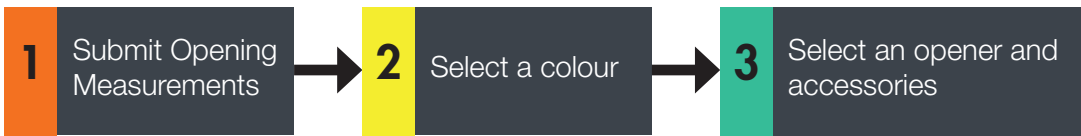
The UniCote® LUX Roller Doors are made from an imported pre-painted steel product designed to suit Australian high-end architecture. Combining the world's best coil coating technology with rigorous testing to Australian standards, it meets all weather conditions, resistant to chipping, peeling or cracking.

#### **Why choose UniCote® LUX finish?**

- **SCRATCH RESISTANCE**  
Good scratch resistance. Testing includes needle scratch test - no marking of paint surface when a needle with a 2kg weight attached is drawn across.
- **IMPACT RESISTANCE**  
No loss of paint adhesion after a test piece is struck on the reverse side with a specified force.
- **BEND RESISTANCE**  
No loss of adhesion or paint cracking when bent around a diameter equal to five times the thickness of the steel sheet.
- **HEAT RESISTANCE**  
Suitable for continuous service up to 100°C. Continuous service at higher temperatures may cause some colour change and damage to the paint film.
- **SALT RESISTANCE**  
Meets the requirements of AS/NZS2728:2013.
- **HUMIDITY RESISTANCE**  
Meets the requirements of AS/NZS2728:2013.
- **UV RESISTANCE**  
Meets the requirements of AS/NZS2728:2013.
- **VISUAL APPEARANCE**  
Made from a luxury material to suit high-end architecture.



# 3 easy steps to order your roller door



## 1 Submit Opening Measurements

In placing an order you will be required to submit the following information.

The range of available sizes in “A” series, “AA” series and “B” series:

### “A” series residential door

(Range from 750mm to 3430mm in width)

### “AA” series residential door

(Range from 3435mm to 5500mm in width)

### “B” series light industrial door

(Range from 2855mm to 5500mm in width)

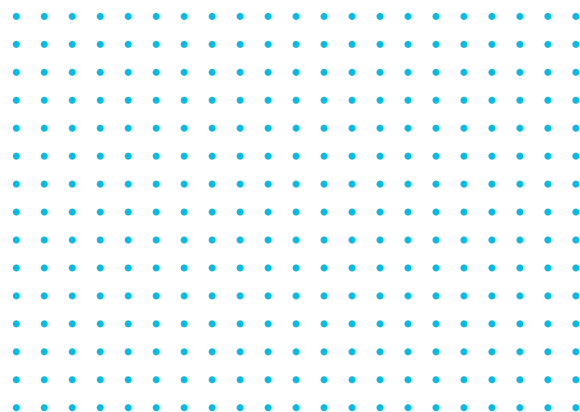
“A” Series Door Heights
Up to and including 1200mm
Up to and including 2100mm
Up to and including 2200mm
Up to and including 2400mm
Up to and including 2600mm
Up to and including 2700mm
Up to and including 3000mm

“AA” Series Door Heights
Up to and including 2200mm
Up to and including 2400mm
Up to and including 2600mm
Up to and including 2700mm
Up to and including 3000mm

“B” Series Door Heights
Up to and including 3300mm
Up to and including 3600mm
Up to and including 4200mm
Up to and including 4800mm
Up to and including 5100mm

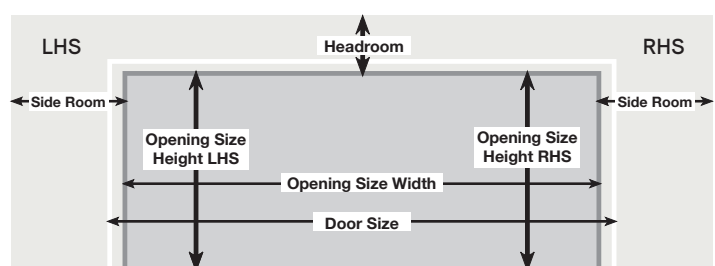
Description	Measurements
Opening Size Height LHS	
Opening Size Height RHS	
Opening Size Width	
Side Room LHS	
Side Room RHS	
Headroom	

<b>Door Size - Width</b>	“A” series = Opening Size + 50mm “AA” series = Opening Size + 100mm “B” series = Opening size + 100mm
<b>Door Size - Height</b>	Refer to “A” series and “AA” series and “B” series above
<b>Side Room - Manual</b>	“A” series = 90mm minimum “AA” series = 125mm minimum “B” series = 185mm minimum
<b>Side Room - With Automatic Opener</b>	“A” series = 120mm minimum “AA” series = 150mm minimum “B” series = 150mm minimum*
<b>Headroom - Minimum</b>	“A” and “AA” series = 430mm-510mm* “B” series = up to 570mm*
<b>Restricted - Headroom</b>	= door opening height may be restricted



**NOTE:** The above table is a guide only and some dimensions may change.

\* Please refer to Steel-Line Roller Door Technical Data Sheet for more details.



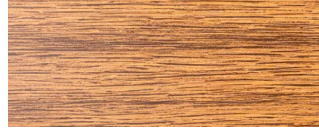
(View from inside of garage, looking out)

## 2 Colour Options

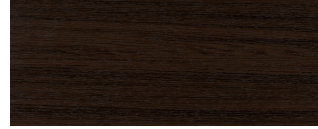
# UniCote® LUX



Brazilian Walnut



Ashwood



African Blackwood



Weathered Iron

### NOTES:

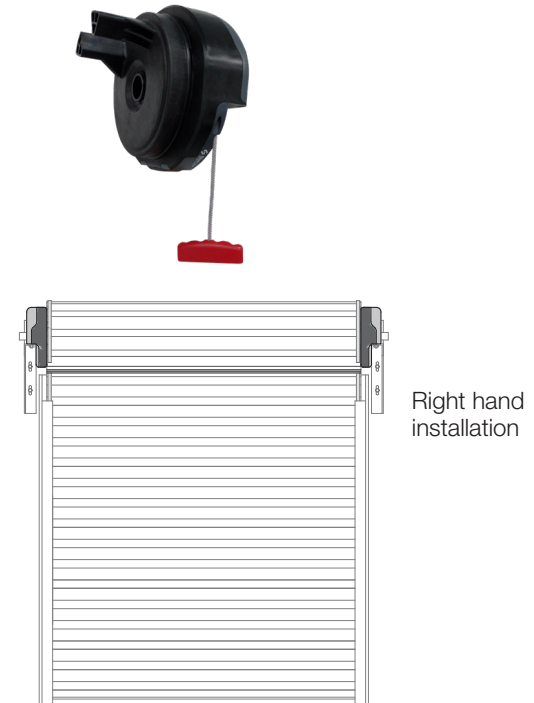
- Ashwood has a smooth finish whilst other "Timbers of the World" series have a slightly textured finish. Please see the product samples. .
- The colours and patterns shown are provided as a guide only. Whilst we endeavour to get as close as possible, the limitations of printing processes make extremely accurate matches impossible. We strongly recommend comparing your choice with actual samples and discussing with your product consultant. Additionally, Steel-Line reserves the right to vary or delete colours without notice.
- For the UniCote® Lux testing information, please see the Unicote® Lux brochure or visit [steel-line.com.au/unicote-lux-garage-doors](http://steel-line.com.au/unicote-lux-garage-doors)

## 3 A small additional investment for greater convenience

### Roller Door Openers

Fit your Steel-Line garage roller door with an automatic opener for hassle free entry to and exit from your garage or shed.

All of our openers are engineered to the highest standards ensuring easy operation, optimum performance, long life and peace of mind.



### Auto Reverse System

For added safety, each installation comes with this automated feature that causes the garage door to immediately stop and reverse when it comes into contact with an object.

### Courtesy Light

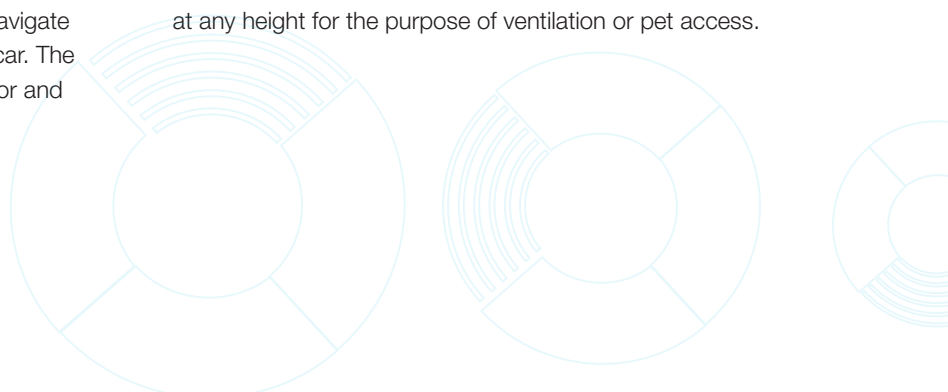
This courtesy light is the most convenient way to navigate through your garage and to get in and out of your car. The light automatically switches on as you open the door and switches off automatically after about 2 minutes.

### Soft Start and Stop Function

This feature is designed to allow for a quiet and smooth door operation, which is important when the garage is located close to bedrooms or living areas.

### Door Stop Programming

This convenient feature allows for the door to be stopped at any height for the purpose of ventilation or pet access.



## Wireless Wall Button

Can be installed near an internal access door to your garage giving you greater convenience to open and close your garage door.



## Remote Handsets

The key ring remote handsets are small and convenient with the ability to operate up to three garage doors or gates from the one unit. A must have for every set of keys in the house.



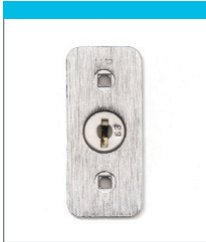
## In-built Safety Timer

This automatic close timer will ensure that your door will close automatically (with optional photo eye beams installed) if you forget to close it yourself.

## Quality and Adaptability

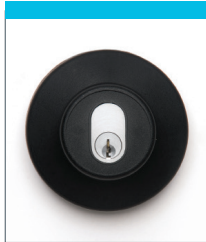
Our roller door openers are manufactured from quality composite materials, and are approved to the latest world-wide standards. They can also be fitted to most popular brands of roller doors with accessories to suit your requirements.

## Automatic Opener Accessories



### Emergency Key Release

Used in case of malfunction or power failure, especially useful if there is no other access to the garage.



### Electronic Key Switch

Allows entry into your garage from outside, via a key lock. Useful when remote handset is not available.



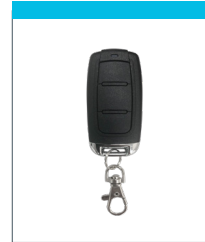
### 'Photo Eye' Technology

For added safety, this allows the garage door to automatically reverse when its sensor light beam is broken by an obstruction, helping to protect your family from injury and your car from the damage caused by contact.



### Weight Bar

Fitted to the bottom rail of the roller door to provide extra weight to help stabilize the door while closing.



### Remote Handsets

A must for every set of keys in the household. The handset memory register will hold up to 15 handset codes.



### Wireless Wall Mounted Remote

Can be installed near an internal access door to your garage giving you greater convenience to open and close your garage door.

Proudly distributed by:

