



# SC1500 Fully Recessed Counterweight Balanced Door

## FEATURES

- NO EXTERNAL PROJECTION
- HIGH TRAFFIC AREAS
- CUSTOM BUILT FOR ALL STRUCTURAL REQUIREMENTS AND ARCHITECTURAL DESIGNS
- CLADDING VERSATILITY
- MINIMAL MAINTENANCE REQUIREMENTS

The SC1500 Fully Recessed Counterweight Balanced Door is custom made and designed for all applications where strength and superior appearance is required and openings designed to span as little as 1 metre to as much as 25 metres in width with no external projection (does not protrude past the external face of building) and where the door is to provide full opening height. The main benefits of the SC1500's Fully Recessed Counterweight Balanced Door is that it achieves the lowest maintenance with the highest operation cycles, able to be designed in a variety of cladding and glazing types.

They are commonly used in car park entries and showrooms. In the case of highly corrosive environments such as sea side locations or adjacent to swimming pools, these situations can be addressed to varying degrees through the use of Duragal galvanised steel tubing.

With the custom made operating mechanism over 100,000 cycles are easily obtained per year, which is by far the lowest maintenance with the highest operational cycles of any conventional door system in Australia. All Steel-Line's counterweight doors are designed to withstand site specific wind loading in accordance to AS1170.2-2002. If wind loads are not provided, the standard industry 0.5 Kpa is used.

### Recommended Specification

SC1500 is custom built for each specific application. Please contact Steel-Line for any technical assistance in design and installation. Listed below are some of the main design considerations when specifying the SC1500:

- Operational Requirements.
- Opening Dimensions.
- Structural Requirements.
- Architectural Requirements.

Therefore it is important to accurately measure the opening dimensions and adequately specify any requirements.

### Opening Requirements

The SC1500 Fully Recessed Counterweight Balanced Door requires operational clearances as well as permanent space for its accommodation. These dimensions vary depending on the application. It is important to take these in to consideration especially the operational clearances as they impinge on other design criteria, for example the drive through clearances.

### Motorisation

Motorisation requires the addition of:

- Motorisation Guides.
- Drive Unit, Including Torque Limiter.
- Independent Limit Switches.
- Overhead Shaft.
- Control System.

When a motorised door is ordered the above mentioned items are included as they are all integral components of the door. Motorisation may be fitted to an existing manual door however this may require extensive modification.

### Locking

Locking is normally provided on manual operated doors only. Pad bolts are fitted internally to allow the door to be latched in the closed position.

Under normal situations motorised doors have no locking devices fitted. This is because the drive unit itself “locks” the door in the open or closed position.

### Cladding / Glazing

Despite the fact that a vertical bar grille format is most commonly requested, the SC1500 Fully Recessed Counter-balanced Door can be designed to accept a wide variety of cladding and glazing materials.

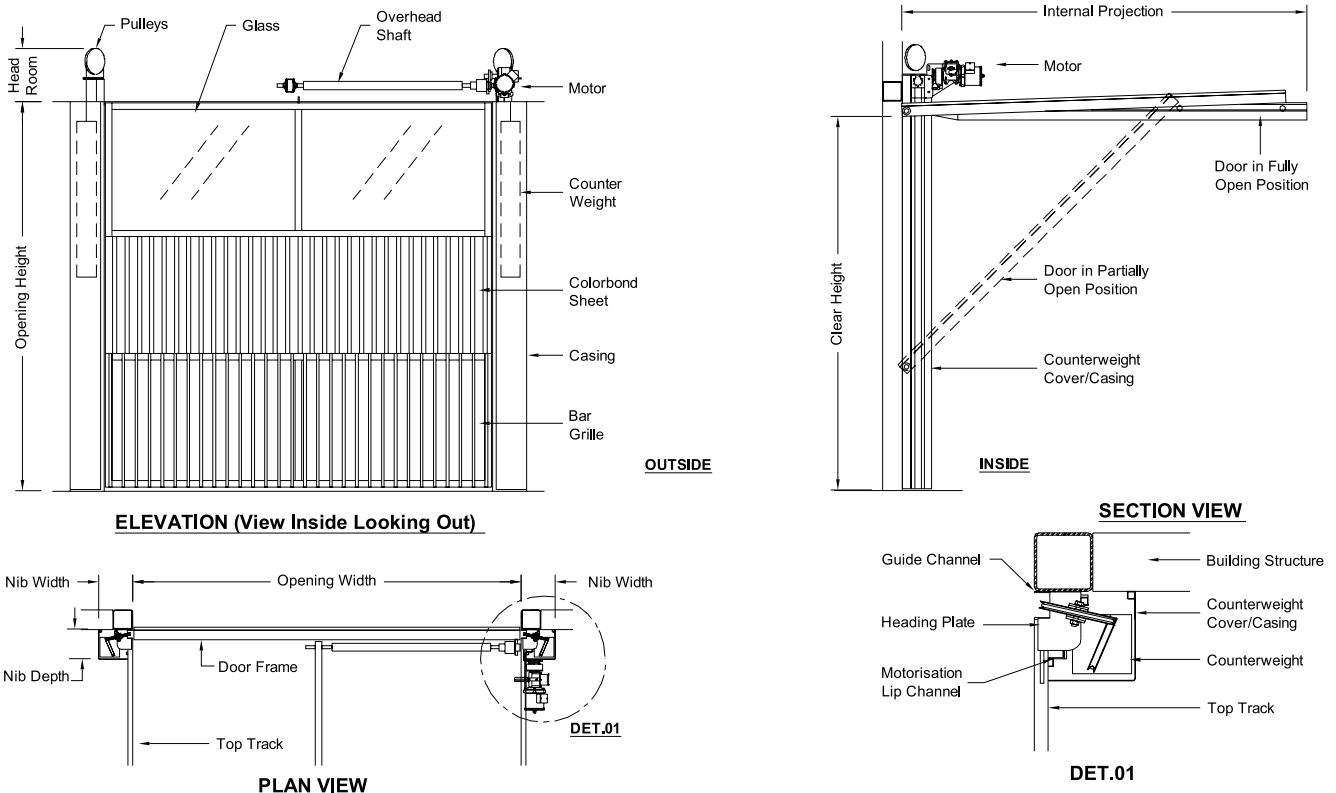
The following combinations of glazing and cladding are quite common:

- Sheeting products such as Trimdek and Custom Orb.
- Toughened Laminated Glass.
- Polycarbonate, Acrylic, Perspex and Laserlite etc.
- Aluminium Composite Panels (ACP).

### Seals Flashings and Counterbalanced Casings

Brush seals can be fitted to the vertical sides and bottom of the door. These reduce the passage of dust and draft.

Counterbalanced casings are normally fitted. They enclose the Counterbalance as a safety precaution and prevent any obstruction to their operation.



Steel-Line reserves the right to change specifications at any time without notice.