



Insulated Garage Doors

If you're ready to draw the line at average and reach for better call us today.

To locate Steel-Line branches across Australia call: **1300 427 243** or visit steel-line.com.au

If you are looking to achieve more energy efficiency throughout your home, or converting your garage into a home office or gym, then consider an insulated garage door as a whole house approach to completing the insulation envelope around your home.

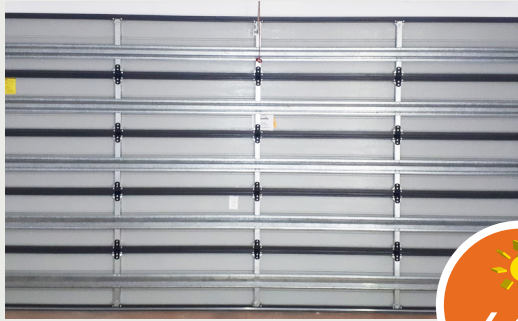
As we become more and more concerned with the amount of energy we use in our everyday lives, a retrofit insulated garage door will not only keep your garage warm in winter and cool in summer, but it also reduces your energy bills.



Steel-Line sectional garage doors are available in a wide range of colours and designs. We have hundreds of choices in design options for you to consider. Combined with an insulation system, our garage door will not only help you save money by saving energy, it will also increase your home's street appeal, reduce outdoor noise and add extra durability and strength to your garage door.

Before

normal garage door



Surface Temperature Reading

After

insulated garage door



Disclaimer: temperatures may vary depending upon orientation and location of garage.

Quality features that will stand the test of time

Steel-Line's insulated garage doors provide insulation from the heat and cold, and are made of first class materials to ensure maximum safety and a long service life. The insulated garage door is constructed with high strength BlueScope steel and retro fitted expanded polystyrene (EPS) laminated panels, finished with an impact resilient vinyl laminate. With a thermal value of R1.47, the garage door insulation minimises the effects of the harsh Australian climate, by reducing heat loss and heat gain transferring through the door panel.

The Award-winning FingerProof™ safety design is a standard feature for Steel-Line sectional garage doors. This unique design not only safeguards your family against serious injury, it also seals out elements that can penetrate conventional garage doors.

We can also help you upgrade and insulate your existing garage door by adding a retro fitted insulation system, which will make your garage more comfortable all year round.

Benefits of an insulated garage door

- Cuts energy costs and saves you money by reducing thermal exchange in your home
- Reduces outdoor noise with the vibration absorbent insulation system
- Gives you that extra space by utilising your garage for a home office, rumpus room, workshop or gym
- Protects you from the harsh climatic elements with our heavy duty garage door bottom rail
- Creates a comfortable living environment by completing the insulation envelope of your home
- Improves the look and street appearance of your home with a stunning garage door and boost your home's resale value
- Gives you hassle free entry to your garage by adding an optional garage door motor
- Reduces greenhouse gas emissions by lowering energy consumption



Proudly distributed by:

ZBRINGD-V3 (1023)
Copyright © Steel-Line Garage Door Australia. All rights reserved.
QBBC: 1129059 | CBS: 223285

Call 1300 427 243 | steel-line.com.au

