

COLOURS

DECO[®] WOOD



DECO[®] VOGUE



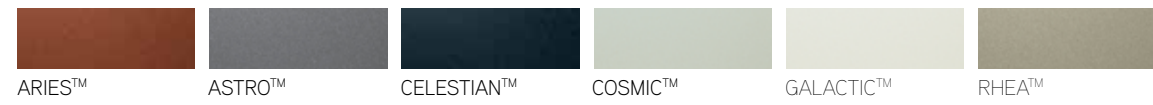
STEEL-LINE RENDERED FINISH[#]



STEEL-LINE MATT FINISH RANGE[^]



Colorbond[®] METALLIC RANGE[#]



Colorbond[®] CLASSIC RANGE



PREMIUM COLOURS^{*}



Dulux More than 70 Dulux colours also available. Please inquire about availability.

Please note: All colours shown on this chart are a guide only. The limitations of printing processes make extremely accurate matches impossible. We strongly recommend comparing your choice with actual samples. Additionally, Steel-Line reserves the right to vary or remove colours without notice.

[^] Not available for roller doors or smooth finish in Ranch, Heritage and Flatline sectional doors.

[#] Only available in a smooth finish and in the Slimline and Glacier sectional door profile.

^{*} Premium colours at premium pricing. Perisher White is only available for roller doors and woodgrain sectional doors. Classic Cedar[®] and Caoba[®] are only available for woodgrain sectional doors.

QUALITY FEATURES



Strong Hinges

Steel-Line uses hinges made of robust plastic or steel for superior strength and trouble free operation.



Finger Proof Safety

Our sectional doors feature a curved finger proof joint for added safety.



Heavy Duty Bottom Rail

To increase strength in the lower part of the garage door and add extra protection.



Optional 'Photo Eye'

Allows the garage door to automatically reverse when its sensory light beam is broken by an obstruction.

OPENERS

A small additional investment for greater convenience

Fit your Strut-Lock[™] wind rated sectional door with a specially designed automatic opener for safe and hassle free entry and exit from your garage or shed.

All of our openers are engineered to the highest standards ensuring easy operation, optimum performance, long life and peace of mind.

- Compliant to Australian and New Zealand Standard AS/NZS 60335-2-95
- Soft start / stop function to ensure smooth and quiet door operation
- Courtesy lighting illuminates your garage when the opener is activated.
- Manual Release: in case of power failure you can simply activate the manual release to open your garage door.
- Safety Auto Reverse System: door immediately stops and reverses when it comes into contact with an object.
- Remote handsets and wireless wall button
- 5 year motor warranty / 2 year electronics warranty



Powerhead



2 x Three Channel Key Ring Transmitters
1 x Wall Mounted Transmitter



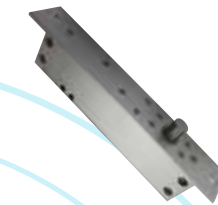
Optional Wireless Keypad

can be programmed with up to twelve user codes, so you can leave your keys at home with the peace of mind.



Optional Battery Backup

provides an energy supply in the event of a power cut.



Optional Secura-Lock

provides enhanced security and peace of mind.

Proudly distributed by:

STEEL-LINE[®]

GARAGE DOORS



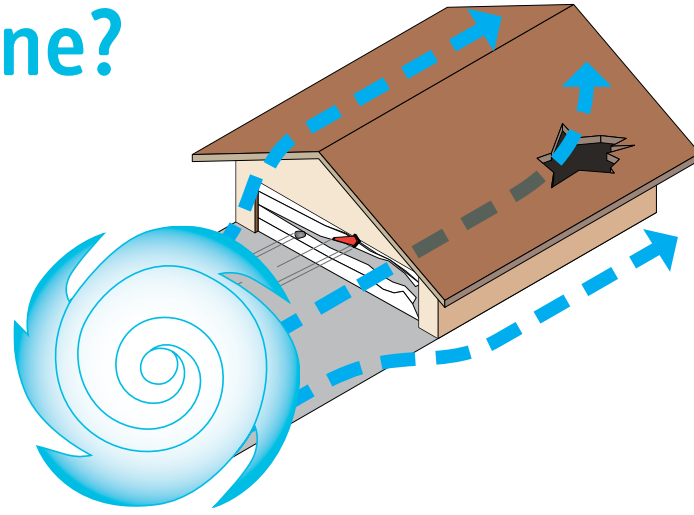
WIND RATED SECTIONAL DOORS

Is Your Garage Door Prepared for A Cyclone?

As the homeowner, it is important to check with your local council for your home's specific wind load requirements and appropriate design pressure.

Australia is a great place to live. However, every year from November to April, cyclones can affect the eastern, northern and western coastlines, so whether you live in the city or the rural area, learning to protect yourself, your family and your property from cyclones is very important.

As the largest point of entry, your garage door offers the greatest threat for high-pressure destruction. A number of studies have discovered one of the common failures during cyclone event was garage doors being blown in or out. This allowed wind and water to enter the house, which caused the roof and walls to fail. On some buildings, the change in internal pressure caused other damage to the structure.



If you live in high wind and cyclonic areas, it's necessary to engineer your garage door a little differently to ensure it withstands the particular stresses it may be subject to and minimise the potential damage to your home.

New homes in cyclone-prone areas of northern Australia are now required to use wind-resistant garage doors, installed professionally to meet the current National Construction Code.

Steel-Line Wind Rated Sectional Doors

Superior strength and rigidity are qualities of the unique design of the Steel-Line wind rated sectional door, suitable for high wind or cyclonic locations.

Stringently tested to meet wind load requirements

Steel-Line wind rated garage doors have been engineered to the highest standard and tested at the James Cook University Cyclone Testing Station against the wind loading requirements of AS/NZS 4505-2012.

Designed for strength and safety

Our Strut-Lock™ Post Free wind rated sectional doors incorporate the use of heavy duty struts, commercial style side hinges, top brackets in combination with a unique stile reinforcement that provides maximum resistance to forces exerted by cyclonic and high winds.

The Wind Brace design featured with removable steel wind brace post(s) that is installed to the garage door once a cyclone warning is received. It takes about 2-5 minutes to install, and no tools are required. This feature can significantly enhance wind resistance up to C4 wind rating while still ensuring a smooth door operation.



Call 1300 427 243 | steel-line.com.au

Heavy duty and reinforced hardware throughout product



Wind Brace Design



Typical Post to Strut Connection Details



Locking Base Plate Fix to Floor



Choose from the stylish Ranch, Heritage, Slimline, Glacier or Flatline designs.



A sleek and contemporary design that adds to the appeal of any modern home.

A minimalist, contemporary design that adds huge street appeal to any home.

A modern slatted design which can be supplied with both a standard wood grain and a smooth finish.

A rectangular design that complements the look of any new or renovated home. This door looks great with a customised window panel.

A traditional design that is popular among colonial and country style homes. Window panels can be added to this door to add to its appeal.

TF: Textured finish. SF: Smooth finish. # Windows can only be fitted to Ranch or Heritage designs in standard Colorbond® colours.

* Smooth finish Slimline and Flatline are only available for the Savannah range.

Various design options to meet size and wind load requirements

GARAGE DOOR	WIND CLASSIFICATION	WIND SPEED (KM/HR)	MAX DOOR HEIGHT (MM)	MAX DOOR WIDTH (MM)
Post Free Sectional Door	C2	220	2580	5500
Wind Brace Sectional Door	C2	220	3405	to 6000
	C3	266	2850	
	C4	310		

Wind Classification

AS4055-2012 is based on a ten-band wind classification system: N1 to N6 for non-cyclonic Region A & Region B; and C1 to C4 for cyclonic Region C & Region D. Higher classifications handle higher wind speeds.

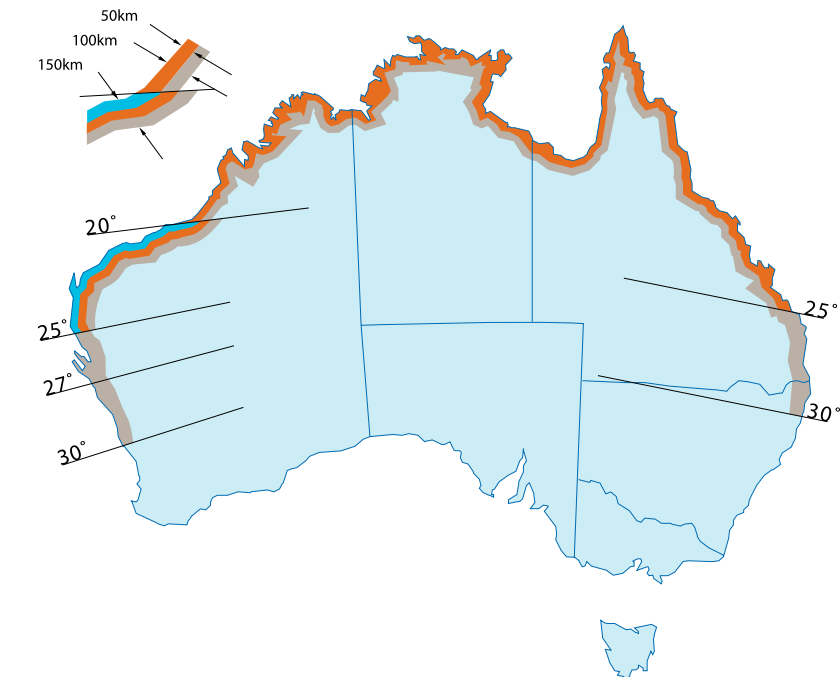
Location Classification

Cyclonic Classification:

Region C Region D

Non-cyclonic Classification:

Region A Region B



Refer to the AS4055-2012, FIGURE 2.1 BOUNDARIES OF REGIONS A, B, C AND D for more information.